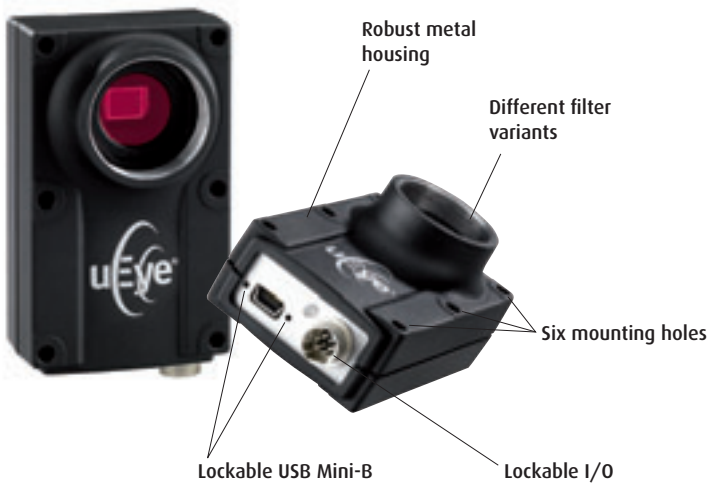
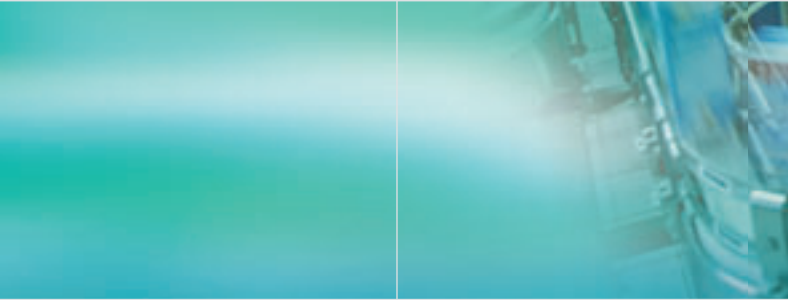


USB uEye® ME



Your imagination is our challenge

USB uEye® ME



USB uEye ME OEM 1 boardlevel
CMOS and CCD



USB uEye ME OEM 2 boardlevel
CMOS and CCD

USB uEye® ME – The “Machine Edition”

With its right angle design, the USB uEye ME is ideal for vision applications where there are space constraints. In addition, its lockable connectors and the industrial grade metal housing make the USB uEye ME suitable for vision applications where reliable performance is required under the most strenuous conditions encountered in many industrial environments.

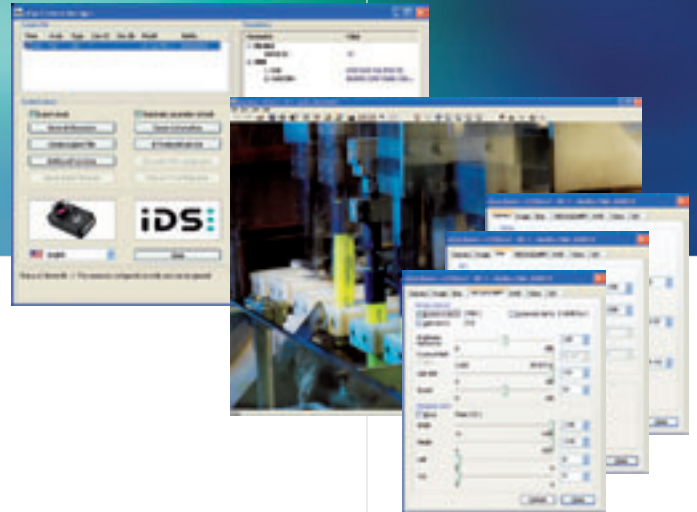
Firmware upload philosophy

The modular uEye concept can also be found in our software: All necessary drivers are only loaded into the camera after it has been connected. With regularly released updates the functionality can thus be enhanced even for already installed cameras.

	Resolution	Framerate	Sensor	B/W	Color	Model
up to 1 Megapixel						
VGA	640 x 480	75 fps	1/3" SONY CCD	x	x	UI-2410ME
VGA	640 x 480	75 fps	1/2" SONY CCD	x	x	UI-2210ME
WVGA	752 x 480	87 fps	1/3" Aptina CMOS	x	x	UI-1220ME
CCIR	768 x 576	52 fps	1/2" SONY CCD	x	x	UI-2220ME
XGA	1024 x 768	30 fps	1/3" SONY CCD	x	x	UI-2230ME
1 to 2 Megapixel						
1.3 Mpixel	1280 x 1024	25 fps	1/2" Aptina CMOS	x		UI-1540ME
1.3 Mpixel	1280 x 1024	25 fps	1/3" Aptina CMOS		x	UI-1640ME
1.3 Mpixel	1280 x 1024	15 fps	1/2" SONY CCD	x	x	UI-2240ME
2 Mpixel	1600 x 1200	18 fps	1/3" Aptina CMOS		x	UI-1550ME
2 Mpixel	1600 x 1200	12 fps	1/2" SONY CCD	x	x	UI-2250ME
+ 2 Megapixel						
3.1 Mpixel	2048 x 1536	11 fps	1/2" Aptina CMOS		x	UI-1460ME
5 Mpixel	2560 x 1920	6 fps	1/2" Aptina CMOS	x	x	UI-1480ME
10 Mpixel	3840 x 2760	3 fps	1/2" Aptina CMOS		x	UI-1490ME



Easy Integration Thanks to Comprehensive Software



Programming: SDK and interfaces

With every uEye camera, you receive a comprehensive software package with drivers for Windows and Linux. Interfaces for various image processing packages, standard drivers such as DirectShow (WDM), a GenICam™ interface as well as our Software Development Kit (SDK) allow individual integration within a very short time.

Programming: Languages and libraries

To make integration as easy as possible and allow use of your familiar development environment, we support the following programming languages: C, C++, C#, Microsoft .NET and Visual Basic. We also provide 3rd party software drivers for Activision Tools, Common Vision Blox, HALCON, LabView, and Neurocheck.

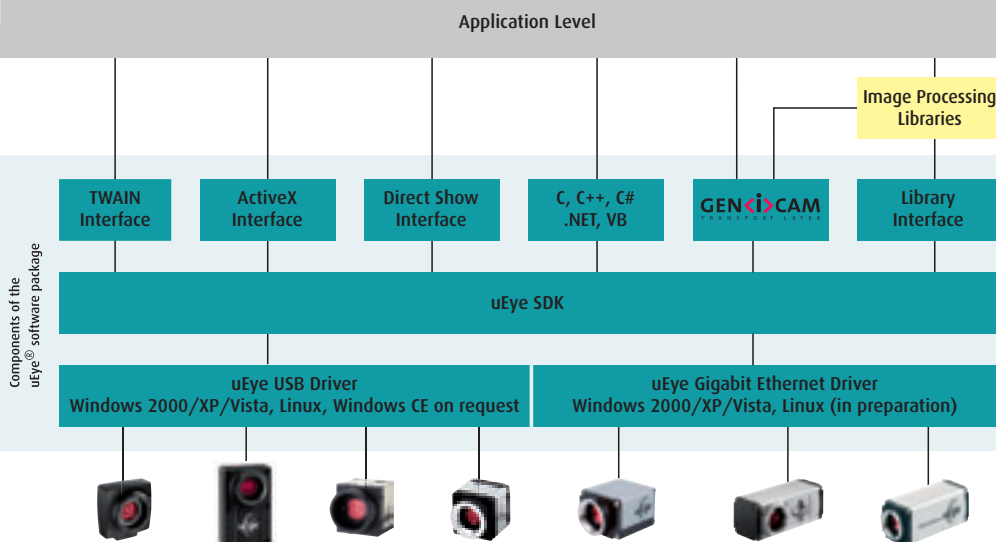
Tools: Easy configuration

The uEye Camera Manager is the central tool for managing all uEye connected to the system. An expert mode gives you additional details on the connected cameras. This central tool helps you avoid bottlenecks and achieve maximum performance.

Tools: uEye® Demo

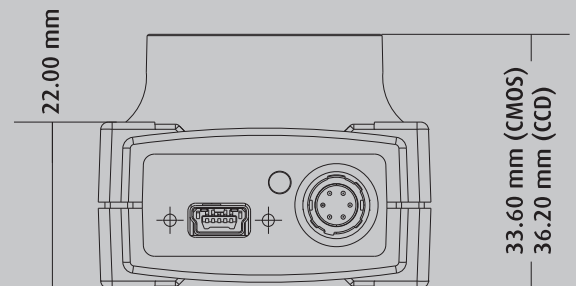
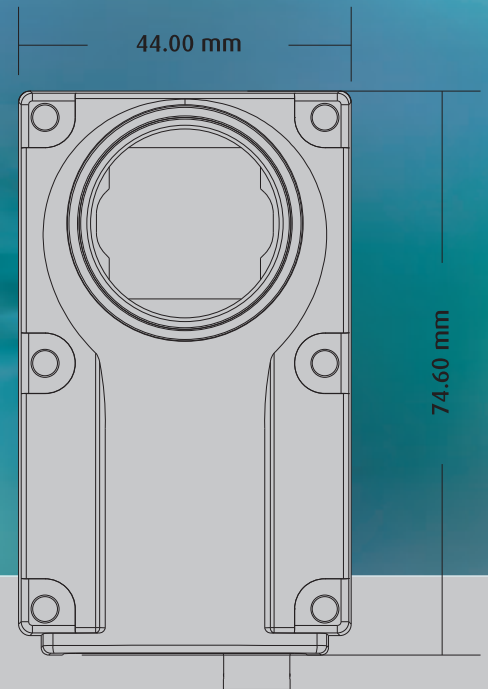
The supplied uEye demo program allows you to start acquiring images with your uEye camera in no time at all. It also allows you to perform image measurement and annotation, in addition to giving you all the tools to configure optimal camera settings for your application.

The uEye® Software



Key Features at a glance

- Universal use with PC, notebook, IPC and embedded systems with USB 2.0 interface
- Resolutions from VGA (640x480) to 10 Megapixel (3840 x 2760)
- Monochrome and color models
- High quality CCD and CMOS sensors
- Up to 87 full frames/sec., over 500 frames/sec. with AOI
- Right angle design available in metal housing or board-level OEM models
- Lockable USB and I/O connectors
- 1 Trigger, 1 Strobe
- Single driver for all uEye cameras. Support for Windows XP, Vista and Linux.
- 3rd party drivers for most common image processing software applications, including LabView, HALCON, Common Vision Blox and NeuroCheck
- On-the-fly firmware upload approach ensures camera is always up to date
- GenICam™ interface



Scale 1:1 (USB uEye ME CMOS)

